

**MBway**  
Management & Business School

**THE MANAGEMENT  
SCHOOL  
THAT MAKES  
THE DIFFERENCE**



[WWW.MBWAY.COM](http://WWW.MBWAY.COM)



**SCAN & MAKE  
THE DIFFERENCE**



# "FOR YEARS, OUR COMMITMENT MAKES OUR DIFFERENCE"

> Companies are looking to hire young, responsible, creative, and entrepreneurial talents with real digital skills and agile working abilities, strong ambitions, and ethical values. MBway meets their expectations by training the managers and business leaders of today and tomorrow, who are aware of their future responsibility to reconcile performance with social, economic, and environmental challenges.

> We are the only ones to offer a 3-year program that combines studying abroad and apprenticeship. Your apprenticeship company will allow you to finance 2/3 of your training and to focus 100% on your success.

> Employability is the best recognition of the quality of our training: **84% of our students are employed within 6 months after graduation and 89% are satisfied with their job.**

> We advocate for innovative, agile, and collaborative pedagogy that emphasizes project-based learning. Our StartUp Challenge, National Business Game, Pitch Party, HR Diagn, MBway incubator, etc., allow everyone to reveal their full managerial and entrepreneurial potential in real-world conditions.

> We are committed to providing our students with daily support from managers and reference professionals. This permanent proximity to the business world has earned MBway **recognition as the school of specialized MBAs.**

> Our high standards are your success. With 18 campuses across France, 3 campuses abroad, and dozens of partner universities worldwide, regional and national and international companies that are committed to our side, our school offers a unique **ecosystem to succeed in your studies and access a first job in future-oriented careers that will take you to the forefront of your ambitions.**

**Our goal is clear: to help you achieve your project and become the professional you dream of being and that makes all the difference.**

**Mehdi Jellali,**  
MBway National Director

ÉTO  
D  
É

# THE STRENGTHS THAT MAKE THE DIFFERENCE

- ✦ **3 years to build your managerial and international profile**  
To quickly access the career you are passionate about
- ✦ **1 International Bachelor's degree + 13 specialized MBA's**  
To choose the best-suited training
- ✦ **1 Master's degree in Grand École Pathway**  
For a premium academic education
- ✦ **100% state-recognized professional certifications**  
For your future employers
- ✦ **100% apprenticeship placement in MBA**  
To immerse oneself in the corporate world
- ✦ **90% of graduates in employment within 6 months**  
For a quick entry into professional life
- ✦ **6,000 students and 15,000 alumni**  
To create a network
- ✦ **18 campuses in France**  
To be close to job markets
- ✦ **3 MBway campuses abroad and 12 partner universities**  
For a successful international experience
- ✦ **50 international double degrees**  
To open the doors to international careers
- ✦ **200 start-up projects per year**  
200 start-up projects per year





# TRAINING FOR THE CORPORATE WORLD WITH AGILITY AND EFFICIENCY

## Our experts by your side

> Joining MBway means above all acquiring a professional approach and knowledge that can quickly be applied in the business world.

## TEACHERS FROM THE PROFESSIONAL WORLD

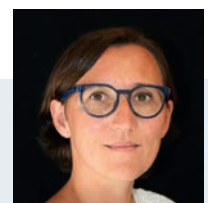
Lecturers, juries, masterclasses, tutors... Our students work all year in real-world conditions alongside recognized professionals from their field: In-service managers, consultants, experts, business leaders... They guide your direction, your learning, and transmit their expertise and passion to you.

## IMMERSIVE COURSES AND INNOVATIVE TOOLS FOR ENGAGING STUDIES

Practical cases come directly from the daily work of lecturers. Students are put in situations as a team manager, project manager, or entrepreneur. **The goal is to help you discover your management style.**

## PROGRAMS CO-CONSTRUCTED WITH COMPANIES

The course programs and skill objectives for each specialized MBA are reviewed annually with recruiters and industry experts. Alumni and tutors are also involved throughout the year in your progress through interventions, thesis juries, and job dating events.



## TESTIMONIAL

ISABELLE FAUCHET

MBway Lecturer

The concept of mentoring, both professionally and in life, is very important to me. Being a lecturer is a true wealth: it is an opening for me to discover new generations, and also a challenge to guide them towards professional success.

## EDTech France

MBway is a part of EdTech France and supports French entrepreneurs who have decided to make technology useful for education and training.

# THE 4 PACT FOR YOUR SUCCESS

Pragmatic, innovative, and effective, MBway's training programs are built around four pillars to ensure our students' success in the corporate world:



## EMPLOYABILITY

# 1

How to market yourself on LinkedIn, develop your storytelling, and expand your professional network: between coaching, personal marketing, and events, you learn to work on your network and enhance your profile. Each student is followed by a training advisor, from their admission to the attain their degree.

## INTERNATIONAL

# 2

The goal is to master English, gain credibility with recruiters, change perspective, but above all to live experiences that foster growth. Arm yourself according to your project: stays or semesters abroad or in a company, double degree, e-learning...

- > 100% of classes in English for the commercial MBA
- > 150 point minimum increase in 2 years on the TOEIC exam

## DIGITAL

# 3

Data protection, cybersecurity, data mining, e-commerce, artificial intelligence, virtual reality: new technologies open new professional horizons across all sectors. You will learn to decipher the trends of your market, but also to adapt to changes and new tools: remote work, project-based, agile method...

## RSE\*

# 4

All our students, regardless of their field, acquire essential skills (inclusive management, carbon footprint and environmental respect, waste management, circular or participatory economy, responsible and ethical governance...) through theoretical teachings, masterclasses and meetings with committed companies, which make them future managers, aware of the impact of their decisions on the world of tomorrow.

\*Responsabilité Sociale de l'Entreprise

## A DIGITAL AND PROFESSIONALIZING ENVIRONMENT

Our commitment is to give you the means to achieve your ambition. MBway adapts to your life as an apprentice, by varying classes on campus and remotely, as well as in companies.

- > **Microsoft Teams:** the leader in collaboration tools for SMEs and large organizations.
- > **LinkedIn Learning:** hundreds of hours of digital courses to go further or review technical points. Your efforts are directly recognized on your CV!
- > **Hyperplanning :** calendar, assignments, appointments, and course materials organized for you in real-time, with just one click, no matter where you are.
- > **Industry-specific software** and professional certifications: **Microsoft Suite, Adobe, Sage, Google Adwords...**



LinkedIn Learning

Adobe

sage



myjobglasses



Compétences validées  
par les certifications  
Tridan & Microsoft Office



# THE TASTE FOR CHALLENGES

Do you want to start your own startup? Are you looking to drive change and innovation within a company? Real-world simulations, MBway's serious games allow you to gain confidence in yourself and strengthen your credibility as an entrepreneur.

## MBWAY BUSINESS GAME

THE BIGGEST BUSINESS GAME IN FRANCE

*In BBI & M1*

> Develop a virtual business by managing market fluctuations and competitors.

**3 days of real-time competition, 18 campuses across France, 3000 students**

JANV

## PITCH BATTLE

THE ART OF ELOQUENCE TO CONVINC

*In M1*

> In the business world, you have very little time to defend your projects.

The Pitch Battle format is perfect for learning how to structure your arguments and gain persuasive power. **3000 students competing.**

FÉV

## MBWAY STARTUP CHALLENGE

PUT YOUR ENTREPRENEURIAL TALENTS INTO

*In M2 (commercial filière),*

> Throughout the year, you are coached and work in teams on a responsible, ecological or innovative start-up project. You pitch your project to a jury of investors and start-up professionals.

**3000 students • 200 start-up projects • 18 finalist start-ups**

MAR

## DIGITAL CHARITY TROPHY

DIGITAL STRATEGY FOR A CHARITABLE ASSOCIATION

*In M1 (MCD filière)*

> You propose your digital marketing talents to the association of your choice. The best campaign from each campus is pitched in front of a jury of experts, to win the Digital Charity Trophy 2023.

**450 students • 75 teams and supported associations**

AVR

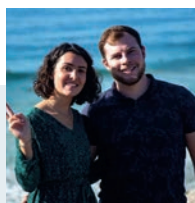
MAI

## GRAND PRIX RH CONSULTING MISSION

*In M2 (HR filière)*

> You create your consulting firm and land an audit mission. Based on feedback from the company and the quality of the diagnosis, a team from each campus will represent their campus at a national final to win the Grand Prix RH 2023.

**550 students • 70 teams • 35 audited companies**



### TESTIMONY

LUCILLE EALET  
ALLAN LE BRONNEC

Alumni MCE 2019 et Co-fondateur de KERBI

MBway has made a difference for me by providing a wealth of knowledge and skills that I have been able to put into practice in my internship and professional life, particularly through the Startup Challenge.

# THE SUCCESS STORIES OF MBWAY ENTREPRENEURIAL

## COMMUNICATION



### NETINUP

Web agency of proximity  
Founder: Corinne Maurer



### PICT YOUR COMPANY

Specialized photography service for companies  
Founder: Aurélie Follain



### LYNX EYE MEDIA

Digital communication agency specialized in video  
Founder: Julien Vignoud

## DESIGN / DIY / DECORATION



Lecoirmontagne.com  
Sarre Chevalier Valde

### LECOIRMONTAGNE.COM

Mountain furniture and decor in store and online  
Founders : : Nicolas Favier



archidvisor

### ARCHIDVISOR

Architecture service comparison platform  
Founders : Aymeric Septvant - Adrien Martin - Aurélien Weiss



### HOOA

eCommerce platform for exceptional artisan creators  
Founder : Noor Bahmed

## HUMAN RESOURCES



### JADDLO SPORTS

100% sport communication agency  
Founder : Léo Jadaud



LE RECRUTEMENT À VOTRE IMAGE

### BFI PARTNERS

BFI Partners, a generalist recruitment firm  
Founder : Thibaud Foncier

## NEW TECHNOLOGIES



### CRYO REFLEX

Specialist in cryotherapy  
Founder : Yohan Gil



### UPSIDE

Indoor amusement park dedicated to virtual reality  
Founders : Mylène Mathis - Abdel Sghir - Franck Moracchioli



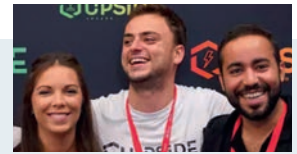
### YOOMONKEEZ

Edtech / mobile learning training  
Founder : Mathilde Petit



## TESTIMONY

FRANCK MORACCHIOLI x ABDEL SGHIR x MYLÈNE MATHIS  
MCE 2017 ALUMNI AND CO-FOUNDERS OF UPSIDE



We have been accompanied from the beginning by our coach and this until the end, a person with a lot of experience in creating a company, to guide us. This is what made the difference and allowed us to launch our entrepreneurial project.



## LIFESTYLE



### LE REPAIRE DES VIGNERONS

Wine e-commerce specialist  
Founder : Gabriel Ferlaud



### PICK AND GRAM

Bulk sales store to make your own home products  
Founder : Mélanie Freichet - Sandra Chamiot-Maitral - Marion Fifre



TEETHCARE

### TEETHCARE

Fun and educational toothpaste for children  
Founder : Inès Balaÿssac



### LES MINI MONDES

Recycled plastic toys  
Founder : Quentin Ory



### KERBI

Eco-friendly sunscreen  
Founders : Lucille Eallet et Allan Le Bronnec

## FOOD



### LA CRIQUETERIE

Sale of insect-based snack products  
Founder : Clément Lakhal



### FÉE D'ÉMOTIONS

Wedding planner agency  
Founder : Morgane Goasdoué



### CANAILLE SPIRIT

Sale of 100% natural drinks from local producers  
Founder : Youssouf Traoré

## THE MBWAY INCUBATOR

Supporting the entrepreneurial projects of our students in partnership with RED MINDS (STARTING FROM M2)

> MBway supports its students with business creation projects. With RED MINDS, benefit from a seed funding and professional coaching.



RedMinds



# REALISE YOUR AMBITIONS

How MBway supports your professional integration and your development in a company?

## GUIDING YOU WELL THE SKILLS PROFILE

A proven career coaching tool, established from the enrollment interview to confirm your specialization and personalize your path according to your goals. Boosting your English, accelerating on soft skills, you have a personalized plan from the start of the school year.

## COACHING YOU FOLLOW-UP BY A TRAINING ADVISOR

Your training advisor follows you, from the choice of your curriculum to the diploma, including your search for an internship: your interviews, marketing yourself on LinkedIn, juggling between school and the company. He also takes care of regular check-ins with your company mentor.

## FINDING YOUR INTERNSHIP THE RIGHT STUDENT-COMPANY

Each year, our 170 training advisors work to match your professional ambitions with the expectations of our partner companies, by sourcing 4500 apprenticeship, professionalization, or alternating internship contracts.

# MBWAY PEDAGOGY MAKES A DIFFERENCE IN BUSINESS

- > Develop your soft skills during challenges and practical cases
- > Stay in daily contact with professionals
- > Quickly and independently boost your skills with our LinkedIn Learning and GoFluent tools for easier integration into the workforce



### TESTIMONY LAURENCE PATEY

Founder of L'Ecommerçante, agency for e-commerce and digital marketing consulting



Internship is a challenge for students, it's double work, a rigor. Combining classes and employment requires a strong commitment but represents a real opportunity to leave school with a well-rounded resume, a network, and real-world experience. Internship, it's having a head start.





2021 GRADUATE PLACEMENT SURVEY\*



\*This seems to be survey data, with numbers and percentages, it could vary depending



MORE than **4,500 partner companies** employ our students in alternance at the **2022** start of the school year

Always closely connected to its environment, each MBway campus maintains partnerships with major companies in the local and national economy.



# YOUR MANAGEMENT SCHOOL IN 3 YEARS

Choose the ideal path to access a high-responsibility position in a career that you are passionate about.

## BUILDING MY MANAGERIAL PROFILE

### BACHELOR BUSINESS INTERNATIONAL

PARALLEL ADMISSION WITH BAC +2

#### BBI



PROFESSIONAL CERTIFICATION  
RECOGNIZED BY THE STATE LEVEL 6 (BAC +3)

- > 1ST SEMESTER OF **INITIAL TRAINING** in France with 100% of courses in English
- > 2nd semester **ABROAD**: Internship and study, campus abroad, over 50 destinations
- > **PREPARATION FOR ONE OF 13 SPECIALIZED MBA IN ALTERNANCE**

### PROGRAMME GRANDE ÉCOLE

PARALLEL ADMISSION WITH BAC +2

#### BACHELOR 3

### 13 SPECIALIZED MBA

PARALLEL ADMISSION WITH BAC +3 / BAC +4

#### MBA 1

- > **MCE**  
Commerce & Entrepreneurship
- > **MPI**  
Professions Real Estate
- > **MIB**  
International Business
- > **MCD**  
Communication & Digital
- > **MGF**  
Management & Finance
- > **MAA**  
Agri Food Business
- > **MGP**  
Management of Wealth

PARALLEL ADMISSION WITH BAC +3 INTERNATIONAL

#### MASTER 1

MASTER MANAGEMENT PROGRAMME GRANDE ÉCOLE

3-YEAR PROGRAM

# THE MBWAY COURSE

Accessible from Bac+2, our course adapted to the professional world and the expectations of students takes place over 12, 24 or 36 months. It allows :

- > To acquire international experience through the Bachelor year
- > To enter the professional world with two years of alternating MBA
- > To complete your training abroad by validating a double degree or a first job abroad



## AND INTERNATIONAL



PROFESSIONAL CERTIFICATION RECOGNIZED BY THE STATE LEVEL 7 (BAC +5)

### MBA 2

#### > HRM

Human Resources

#### > CSR

Corporate Social Responsibility

#### > MSH

Social Relations & HR Strategy

#### > SCM

Supply Chain

#### > MDP

Project Management

#### > MDA

Purchasing



DOUBLE DEGREE GRADE MASTER OF STATE LEVEL 7 (BAC +5)

### MASTER 2

## PURSUE YOUR CAREER INTERNATIONALLY

ACCESSIBLE TO BAC +5

POST-GRADUATES IN 1 YEAR AFTER YOUR MBA

- ENGLAND (BRISTOL)
- IRELAND (DUBLIN)
- SPAIN (MURCIA)
- UNITED STATES (RIVERSIDE - NEW YORK - IRVIN)
- AUSTRALIA (GOLD COAST)
- SOUTH KOREA (DAEJEON)
- MALAYSIA (KUALA LUMPUR)

MASTERS (MS) // MASTERS OF SCIENCE (MSC) //  
 MASTERS OF BUSINESS ADMINISTRATION (MBA) //  
 POSTGRADUATE CERTIFICATES (PGC) MORE THAN 30  
 SPECIALIZATIONS

1ST JOB  
 IN CANADA





# OUR CURRICULUM BACHELOR / MBA / PGE

# INTERNATIONAL BUSINESS

## THE WORLD IS YOURS

Whether you hold a Bac +2, +3 or +4, MBway offers you multiple opportunities to study abroad. With a focus on the global world and today's businesses, the Bachelor in International Business (BBI) and the MBA in International Business Management give you all the tools to build your professional project and give an international dimension to your career.

**The 3 MBway campuses in Mexico, Canada, and South Africa are ideal for internships abroad and exploration trips as preparation for a double degree.** Become a holder of a double degree, a specialized MBA in International Business and a Master's degree from the conference of grandes écoles. A 3-year program with 6 months abroad to build international experience.

**NEARLY 70%\***  
**OF RECRUITERS**  
PREFER CANDIDATES WITH  
LINGUISTIC PROFILES

**57%\* OF**  
**EXECUTIVES**  
PRACTICE ONE OR MORE FOREIGN  
LANGUAGES

## THE INTERNATIONAL ASPECT: A DIFFERENCE MAKER!

- > Enhancing your CV and increasing your employability by living a professional or study experience abroad: while developing your autonomy, you discover new cultures, economic ecosystems, and familiarize yourself with intercultural management practices.
- > Expatriation naturally certifies your English level and allows you to build your manager profile, offering real career opportunities on-site or in your home country.
- > Don't want to come back? Double degrees and "1st Canadian job" ensure your employability abroad.

### 3 YEARS TO BUILD YOUR INTERNATIONAL AND MANAGERIAL PROFILE!

BBI  
YEAR 1

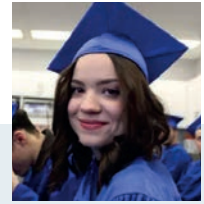
MBA MIB  
YEAR 2 AND 3

MASTER PGE  
YEAR 2 AND 3

DOUBLE DEGREE  
INTERNATIONAL  
OR  
FIRST JOB

\*Sources : [www.cereq.fr](http://www.cereq.fr)

FOR MORE INFORMATION, VISIT [WWW.MBWAY.COM](http://WWW.MBWAY.COM)



## TESTIMONY

ILÉANA TANCRÉ

BBI 2021 student

I chose the Bachelor Business International program because of the quality of the courses taught in English, which allows her to gain professional vocabulary. The second part of the year takes place abroad which is an added benefit to her CV and allows her to gain a global perspective.

# BBI BACHELOR BUSINESS INTERNATIONAL

> The first of the 3 years in the MBway program is designed around a decisive goal: to experience the international and prepare you for the continuation of studies in an MBA.

> Accessible after a Bac +2, the BBI allows you to acquire a common foundation of skills in management, business development, and management, essential before specializing in an MBA in a specific field of activity.

## THE **+** OF THIS BACHELOR :

- **1st semester:**
  - Fundamental courses in business, management, marketing, human resources, and law
  - English language eLearning to bring language skills up to par
  - 100% of courses taught in English
- **2nd semester:**
  - Study abroad experience in an English-speaking country, including internships and/or on-campus options (3 options to choose from)

## 3 MBWAY INTERNATIONAL

## CAMPUS

### OPTION 1

#### MBWAY CAMPUSES ABROAD

The business school abroad: 6 to 10 weeks of internship and 3 to 5 weeks of classes, with students from our 18 French campuses. Housing, visa, interviews or repatriation: you leave with peace of mind.

### OPTION 2

#### ACADEMIC AND PROFESSIONAL EXPERIENCE ABROAD

MBway has developed partnerships with 12 foreign universities in Europe and worldwide. In total immersion on the campus with local students, you attend 3 to 5 weeks of classes, followed by a professional immersion of 6 to 10 weeks.

### OPTION 3

#### INTERNSHIP OR ACADEMIC STAY ABROAD

The MBway International Office helps you to choose from more than 50 universities in Europe or worldwide. It also makes its network available to secure an internship in the country of your choice and to organize all aspects of your stay.



SOUTH AFRICA - CAPE TOWN



MEXICO - LEÓN



CANADA - TORONTO





# CONTINUING STUDY ABROAD

## SUMMER SESSION

Intensive "Business English" in Toronto

> For 3 weeks between the years of MBA 1 and MBA 2, take intensive business English courses in Toronto on the MBway campus, in partnership with the North American Business College. A real boost for your international career.

## FOREIGN INTERNSHIP

(IN MCE, 2 YEARS)

> MBway is the only school that offers you the financial benefits of an apprenticeship contract during a professional experience abroad:

• **Semester 1** : in alternate in France in your company.

• **Semesters 2 & 3** : in alternate abroad in your company. The courses are e-learning and the exams are at a distance.

• **Semester 4** : in alternate in France in your company. Presentations and exams on campus. FOREIGN INTERNSHIP (IN MCE, 2

**The royal route to access a managerial position in an international company as soon as your first job.**

## FIND YOUR FIRST JOB IN CANADA



> MBway opens the doors to an international career by allowing you to land your first job in Canada.

> Montreal, Toronto, Quebec... with your diploma in hand, choose the city where you want to have a first professional experience of 6 months to 1 year in your field of activity: Marketing & Sales, Creative Design, Logistics, Web, Finance, Human Relations...

> **Take it easy! MBway takes care of all the formalities (VISA, insurance, SEVIS, job search, interview organization) and all you have to do is choose the position that you like!**







# THE DOUBLE DIPLOMA A WINNING CHOICE!

In MBA 2 or post-diploma, confirm your international potential by obtaining a double diploma in France and abroad. Thanks to agreements signed with 9 partner universities in England, Australia, USA... MBway opens the doors to an international career.

## ENGLAND

BRISTOL - University of the West of England  
5 MASTERS OF SCIENCE (MSc)

## AUSTRALIA

GOLD COAST (near Brisbane) - Southern Cross University  
9 MASTER OF BUSINESS ADMINISTRATION (MBA)

## SOUTH KOREA

DAEJEON - SolBridge International School of Business  
1 MASTER OF BUSINESS ADMINISTRATION (MBA)  
1 MASTER OF SCIENCE IN MARKETING ANALYTICS (MSMA)  
1 MASTER IN MANAGEMENT & TECHNOLOGY (MIMT)

## SPAIN

MURCIA - Universidad Católica San Antonio de Murcia (UCAM)  
1 MASTER OF BUSINESS ADMINISTRATION

## UNITED STATES

RIVERSIDE - University of California Riverside  
2 POSTGRADUATE CERTIFICATES (PGC)  
14 POSTGRADUATE DIPLOMA (PGD)

NEW YORK - Lubin School of Business  
2 MASTERS (MS)

IRVIN - Westcliff University  
2 GRADUATE CERTIFICATES

## IRELAND

DUBLIN - Dublin Business School (DBS)  
3 MASTER OF SCIENCE (MSc)  
1 MASTER OF BUSINESS ADMINISTRATION (MBA)

## MALAYSIA

KUALA LUMPUR - Asia Pacific University of Technology & Innovation  
2 MASTER OF BUSINESS ADMINISTRATION (MBA)  
2 MASTER OF SCIENCE (MSc)  
1 MASTER OF PROJECT MANAGEMENT



BRISBANE



KUALA LUMPUR



# OUR SPECIALISED MBA

## COMMERCE / ENTREPRENEURSHIP MARKETING / DIGITAL AGRI-FOOD BUSINESS REAL ESTATE

95 900

BUSINESSES\* WERE CREATED  
IN FRANCE IN 2021

10,8%

OF GDP\* CONCERNS  
THE REAL ESTATE SECTOR

1 million

JOBS\* CREATED IN FRANCE IN  
THE DIGITAL BY 2030

1<sup>st</sup>

INDUSTRIAL EMPLOYER\*  
FRENCH (AGRI-FOOD SECTOR)

### SECTORS IN FULL EXPANSION

New forms of management, digitalization, changes in regulations and consumer expectations: innovative and international companies must adapt their strategies.

#### Connect to your future!

> The digitization of all sectors of the economy redraws the boundaries of the company and opens new business perspectives, in France as well as internationally.

> Combining salaried and entrepreneurial careers, today's careers are hybrid and bring unprecedented professional opportunities that must be anticipated.

> AdTech, responsible food, process automation: from tech to agri-food, the French economy has no shortage of assets to remain competitive.

> AdTech, responsible food, automation of processes: from tech to agri-food, the French economy has many assets to remain competitive.

#### Train for the jobs of tomorrow

- MBA MCE: BUSINESS MANAGEMENT & ENTREPRENEURSHIP
- MBA MCD : MARKETING COMMUNICATION & DIGITAL
- MBA MAA: AGRIBUSINESS MANAGEMENT
- MBA MPI : MANAGEMENT OF REAL ESTATE PROFESSIONS

MORE INFORMATION ON [WWW.MBWAY.COM](http://WWW.MBWAY.COM)

\*Sources: INSEE - the report "The Jobs in 2030" published by France Stratégie and the DARES (Directorate for the Animation of Research, Studies, and Statistics)



# OUR SPECIALISED MBA FINANCE MANAGEMENT BANKING & INSURANCE WEALTH



**50%**  
OF HIRED EXECUTIVES\* IN  
FINANCE ARE UNDER 30



**+21 500**  
HIRINGS\* IN 2022 IN WEALTH  
MANAGEMENT

## GROWTH-GENERATING CAREERS

Dynamic and job-providing sectors, management, banking, and insurance have opened up to start-ups, new entrants, and fintechs thanks to digital transformation tools and in response to current consumption patterns. Real recruitment prospects

### Real recruitment prospects

- > Crowdfunding, artificial intelligence, cybersecurity, cryptocurrency, customer data protection, blockchain, marketplaces and augmented reality: start-ups, fintechs and proptechs are thriving. With online banks, the sector has never been more promising!
- > These innovations open up unprecedented professional prospects and create new functions such as Big Data Analyst, Risk Manager, Compliance Lawyer, Non-financial Analyst, Cryptocurrency Advisor and Property iBuyer. Key functions that are hiring: middle and back office.

### Train for excellence!

- **MBA MGF: MANAGEMENT GESTION & FINANCE**
- **MBA MGP: WEALTH MANAGEMENT**

MORE INFORMATION ON [WWW.MBWAY.COM](http://WWW.MBWAY.COM)

\*Sources: [www.fbf.fr](http://www.fbf.fr) - HAYS (national remuneration study) - [www.start.lesechos.fr](http://www.start.lesechos.fr) - [immobilier.cbre.fr](http://immobilier.cbre.fr)



# HUMAN RESOURCES LABOR RELATIONS

**78%**

OF HR EXECUTIVES\*  
HOLD A BACHELOR'S  
DEGREE OR HIGHER

**+30 000**

JOBS\* AVAILABLE EACH  
YEAR IN  
HUMAN RESOURCES

## HUMANITY AT THE HEART OF COMPANIES

Recruitment, quality of work life, training, digitalization, teleworking: in the era of e-HR, companies have growing needs to valorize their human capital and are looking for profiles capable of responding to new management practices.

### **HR function: a strategic business partner**

> The web and social networks have established themselves as priority predictive recruitment channels: to detect the best talents, companies deploy artificial intelligence and multichannel e-marketing strategies to attract talents.

> The development of the employer brand leads HR functions to improve their animation and listening capabilities to employees, while offering managers the opportunity to practice proactive skills management. Remote work, crisis management, job changes: expertise in labor relations is essential to preserve human capital, the engine of any structure.

### **Properly training you, the key to success!**

With its MBA, MBway prepares you for the exercise of these strategic professions with many responsibilities:

- **MBA HRM: HUMAN RESOURCE MANAGEMENT**
- **MBA LRS: LABOR RELATIONS AND HR STRATEGY**

MORE INFORMATION ON [WWW.MBWAY.COM](http://WWW.MBWAY.COM)

\*Sources : [www.studyrama-emploi.com](http://www.studyrama-emploi.com) - [www.andrh.fr](http://www.andrh.fr) - Grande Enquête ANDRH - Entreprise & Carrières





## OUR SPECIALIZED MBA PROGRAMS

# PROJECT MANAGEMENT SUPPLY CHAIN / PURCHASING CORPORATE SOCIAL RESPONSIBILITY

22 M

JOBS\*

WILL BE CREATED BY 2027,  
IN PROJECT MANAGEMENT

83%

OF EMPLOYEES\*

IN COMPANIES WITH A CSR DEPARTMENT CLAIM  
ITS "POSITIVE IMPACT" ON SOCIETY

6<sup>th</sup>

OF EMPLOYEES\*

IN COMPANIES WITH A CSR  
DEPARTMENT CLAIM

### DYNAMIC SECTORS THAT ARE HIRING

The evolution of organizational methods and new consumption habits make purchasing, supply chain and project management key dimensions for companies looking to increase agility or innovate to better meet market needs, regardless of their size, industry, or market.

#### Sectors driven by digital transformation

> Team agility, cost rationalization, timely optimization, customer satisfaction: project management allows companies to gain flexibility, productivity, and to be sustainably engaged in a continuous improvement of the quality of their products and services.

#### Jobs driving the CSR strategy

> Stock management, cost and goods flow optimization: globalization, local products, new consumption habits driven by digital and sustainable development place the jobs in the supply chain and procurement sector at unprecedented recruitment levels, both in France and internationally.

#### Key positions at the heart of corporate management

With its MBA programs, MBway gives you every opportunity to succeed in these future-oriented careers.

- **MBA MDP: PROJECT MANAGEMENT**
- **MBA MRSE: CORPORATE SOCIAL RESPONSIBILITY AND MANAGEMENT**
- **MBA MSC: SUPPLY CHAIN MANAGEMENT**
- **MBA MDA: PURCHASING MANAGEMENT**

FOR MORE INFORMATION, VISIT [WWW.MBWAY.COM](http://WWW.MBWAY.COM)

\*Sources : BFM Business - [www.pmi.org](http://www.pmi.org) - [www.regionsjob.com](http://www.regionsjob.com)



# OUR MBWAY GRADUATES, SUCCESS OF OUR NETWORKING

- > For years, nearly 15,000 graduates have joined the workforce and made a reputation for MBway
- > They are the mentors of our interns, participate in our student activities, and serve on the jury for thesis and challenges.
- > They are directors, managers, entrepreneurs, and business leaders in France, Europe, and internationally who are daily involved in the life of our campuses.

- > Today, building a professional network is fundamental for your future career. All MBway graduates have access to [mbway-alumni.com](http://mbway-alumni.com), a dedicated platform to keep in touch with their campus, build a network, hire and find new career opportunities or support business creation projects.

- > The MBway Alumni website brings together and engages all graduates to allow them to exchange on their campuses, find their internships and professional opportunities.



Find out more



## TESTIMONY

**CHARLENE** MRH-2018  
**HR MANAGER - ST REGIS BORA**

Becoming a Human Resources Director at such a prestigious establishment was an important step in my career. I would have never gotten my current position if I hadn't gone through internships. I worked hard to obtain my MBA and in my various professional experiences but the most important thing is knowing how to seize opportunities.



## TESTIMONY

**ALEXIS** MDP-2020  
**PROJECT MANAGEMENT  
CONSULTANT - EXTIA**

As a Project Management Consultant, my missions concern the project management for a three-year mission with the SNCF. My role is to manage more than 25 projects: to manage the different core businesses necessary to carry out engineering studies. I really enjoy my job, it's exactly what I was looking for to develop myself. The autonomy and the degree of responsibility that I am given really stimulates me to carry out a project.



### TESTIMONY

**FÉLICIA** MSH-2016  
**RECRUITMENT AND HR  
DEVELOPMENT OFFICER – RUBIX**

After my apprenticeship, I was offered a permanent contract to continue my duties as a Recruitment and HR Development Officer. I manage careers, skills, and employer branding. The position I hold today is what I was looking for. What drives me, beyond the good atmosphere and management, are the projects. The group is growing and changing every day. I love being at the heart of the development of our employees, which is closely linked to the recruitment and integration strategy.



### TESTIMONIAL

**FLORA** MSCA-2020  
**FOUNDER TOUCH UR STARS**

The MBway training has completely contributed to the evolution of my project as this apprenticeship allowed me to fully understand the notion of entrepreneurship and acquire knowledge that I now use in my business. MBway is also an open training, a strength for students as this versatility allows them to move towards many different sectors.



### TESTIMONIAL

**AXEL** MGF-2020  
**ADMINISTRATIVE AND FINANCIAL  
EXPERT - EDF**

I am an administrative and financial expert within a team of accounting, management control, purchasing... this variety of profiles around me, allows me to develop my professional skills and enrich my experience on a daily basis.



## Today, building a professional network

is essential for your future career.



### TESTIMONIAL

**PAULINE** MCE-2015  
**BUSINESS MANAGER FOR KEY  
ACCOUNTS - GROUPE SII**

It's an education rich in experience. MBway implements all the means necessary for the success of its students. It's a winning training that you will be proud to represent. Today, I contribute to the national listing of strategic customer accounts for the Groupe SII. I coordinate the development of account plans and complex sales within my area



### TESTIMONIAL

**PRISCILA** MCD-2018  
**RECRUITMENT AND EMPLOYER BRANDING  
OFFICER - FYM ACTION**

My goal is to have a differentiating card with a Digital Communication Marketing part in Human Resources, to support companies in inbound recruiting and developing the employer brand and candidate brand. That is what I am doing today as Recruitment and Employer Branding Officer at Fym Action.





> Throughout the year, professional, association and entrepreneurial events are organized to make your years at MBway a memorable experience and a professional and student experience beyond the courses.

## **INTEGRATION WEEKEND**

### **PROFESSIONAL EVENTS & SITE VISITS:**

DIGITAL SUMMITS, PROFESSIONAL TRADE SHOWS, ANNUAL MEDEF CONVENTION...

## **DEGREE AWARDS CEREMONY**

## **AFTERWORKS AND STUDENT PARTIES**

## **#MBWAYCONTEST**

## **ALUMNI EVENING**

## **MBWAY LONDON TOUR**

# **A CAMPUS LIFE THAT BRINGS TOGETHER & INSPIRES**

> The MBway campuses are bustling with activity from their students, partner companies, and alumni.





## EVENTS IN FAVOR OF YOUR EMPLOYABILITY

- Technical workshops for job search
- Special apprenticeship job dating
- Meetings between companies and alumni
- Masterclasses and expert speeches
- Thematic career forums
- Entrepreneurial challenges

## SOME POPULAR CONFERENCES

- The job market in Switzerland
- Positive management
- Being an apprentice in 2022
- Management & disability
- CSR: What diagnosis for my company?
- The industry of the future
- Boost your career, dare to go international
- The challenges of digital transformation at the heart of the company



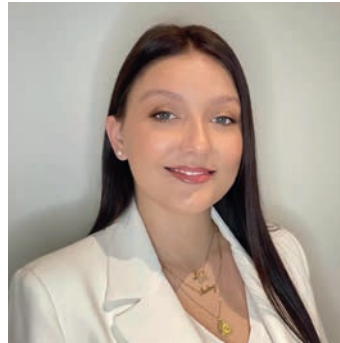
# OUR STUDENTS HAVE HEART AND TALENT



**CARITATIF – HANDICAP**  
**MÉDAILLÉ ARGENT CHAMPION**  
**DEAFLYMPICS FOOTBALL**  
Joffrey Tavares



**SPORT**  
**PARTICIPATION AU 4L TROPHY**  
Amandine Buchard



**INTERNATIONAL**  
**UNIVERSITY OF THE WEST**  
**OF ENGLAND / BRISTOL**  
Léa Boccard



**COMMERCE**  
**FINALISTE CONCOURS**  
**LES NÉGOCIALES 2022**  
Alban Cornille



**INTERNATIONAL**  
**STAGE AU CAMBODGE**  
**INSTITUT ÉQUESTRE**  
Chloé Chabanol



**COMPÉTITION**  
**FINALISTE CONCOURS**  
**D'ÉLOQUENCE 2022**  
Arjun Sighn



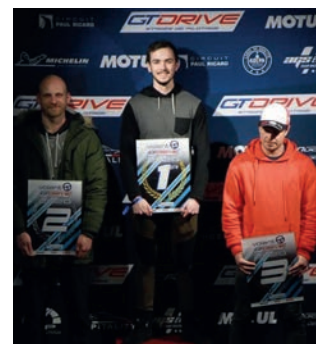
**COMPÉTITION**  
**GAGNANTES PITCH**  
**CHALLENGE 2022**  
Gaëlle et Agathe



**ENTREPRENEURIAT**  
**AUTO-ENTREPRENEUSE**  
**PETLOVA TAG & GAGNANTE**  
**DU CONCOURS APEF FÉMININ**  
Mirah Tjandra Wisata



**CARITATIF**  
**PRIX DÉPARTEMENTAL**  
**DE L'ENGAGEMENT CITOYEN**  
Pierre Letemplier



**SPORT**  
**5<sup>E</sup> PLACE DU CHAMPIONNAT**  
**MIJET 2.0L (COURSE AUTOMOBILE)**  
Dylan Chalumeau

# MBWAY IS A MEMBER OF THE EDUSERVICES ALLIANCE

THE SMART NETWORK\*

A smart network with high added value: **23** brands and vocational training centers in **42** French metropolises, a team of **2,900** people, **280** advisers in direct contact with **10,000** partner companies, **34,000** students, the French leader in apprenticeships with **24,000** apprentices, a community of over **100,000** alumni.

## MILITANT CAMPUSES

1 Fighting against unemployment of 18-25 year-olds and against failure in university degree, inclusion through apprenticeship and access to higher education for all disabilities, sustainable development (100% French green energy contract, conversion to circular economy) ... The Alliance goes further and further in Corporate Social Responsibility and respect for Environmental, Social, and Governance (ESG) criteria. Environnementaux, Sociaux et de Gouvernance (ESG) criteria.

## THE REAL STUDENT LIFE

2 Connected campuses, digital learning, cutting-edge professional software, quality working environment, co-working spaces, MAC and PC rooms, coffee shops, relaxation areas, student life ... The Alliance creates optimal conditions for the success of each individual.

## A PERSONAL COACH

3 A single contact person in each school, a training advisor Unique reference present in each school, training advisor and dedicated pedagogical coordinator, building study paths, international mobility, double training-double degrees, starting a business... Alliance guides students in all their projects.

## A CUSTOMIZED PATH

4 Inter-school, inter-region, reorientation, international bridges, continuation/resumption of studies, 23 schools and 73 establishments = 1,700 possible combinations to individualize paths, according to talents and desires... Alliance offers the choice to find the best training fit for one's profile.

With Alliance EduserVICES, everything is possible. The paths leading to the profession you dream of are numerous, show yourself, dare and make your difference an asset. We give you the keys to success.

JOIN THE ALLIANCE !

## AN INCUBATOR OF TALENTS

5 An innovative and collaborative pedagogy that prioritizes project-based studies, business games, digital weeks, challenges, pitches, masterclasses, real-world professional experience... far from traditional academic classes, "passion studies." The Alliance unveils your skills and gives you confidence..

## AN AMBITIOUS FUTURE

6 Permanent immersion in the business world through apprenticeships, a variety of professional experiences, internships, consulting assignments, networking events and job dating... Support in marketing your employability and building your professional network. The Alliance makes employability a priority.

## AGILE AND INNOVATIVE STUDIES

7 Multimodal studies, 100% online, on campus, in a company, in initial and/or in apprenticeship, schedules accommodated for athletes, international exposure... Alliance offers great flexibility for you to fully invest in all your projects.



\* The smart grid  
\*\* Trainer

# 18 CAMPUS

## ➤ ANGERS

299, avenue du Général Patton  
49 000 Angers  
Tél : 02 41 73 96 91

[angers@mbway.com](mailto:angers@mbway.com)  
Direction : Justine Morel

## ➤ ANNECY

42, chemin de la prairie  
74 000 Annecy  
Tél : 04 50 45 79 81

[annecy@mbway.com](mailto:annecy@mbway.com)  
Direction : Anne-Gaëlle Martinod

## ➤ BORDEAUX

4 quai des Queyries  
33 100 Bordeaux  
Tél : 05 56 33 35 36

[bordeaux@mbway.com](mailto:bordeaux@mbway.com)  
Direction : Ana Mousnier

## ➤ CAEN

6 rue recteur Daure  
14000 CAEN  
Tél : 02 61 52 02 63

[caen@mbway.com](mailto:caen@mbway.com)  
Direction : Frédérique Sanvicente

## ➤ CHAMBÉRY

15, boulevard de la Mer Caspienne  
73 370 Le Bourget-du-Lac  
Tél : 04 79 69 65 91

[chambery@mbway.com](mailto:chambery@mbway.com)  
Direction : Nadia Khalifa

## ➤ GRAND GENÈVE

16, rue des Chasseurs  
74 100 Ville-la-Grand  
Tél : 04 58 02 02 66

[grand-geneve@mbway.com](mailto:grand-geneve@mbway.com)  
Direction : Anne-Gaëlle Martinod

## ➤ GRENOBLE

Immeuble Héliopolis  
16, rue du Tour de l'Eau  
38 400 Saint Martin d'Hères  
Tél : 04 85 19 01 18

[grenoble@mbway.com](mailto:grenoble@mbway.com)  
Direction : Sophie Durant

## ➤ LILLE

57, rue Pierre Mauroy  
59 000 Lille  
Tél : 03 66 72 96 30

[lille@mbway.com](mailto:lille@mbway.com)  
Direction : Amélie Lecomte

## ➤ LAVAL

5, rue Marie Curie  
53810 CHANGE  
Tél : 02 43 59 70 10

[laval@mbway.com](mailto:laval@mbway.com)  
Direction : Virginie Lecas

## ➤ LYON

Le Cubiik  
1 Rue Pierre Bourdeix  
69007 Lyon  
Tél : 04 72 91 36 38

[lyon@mbway.com](mailto:lyon@mbway.com)  
Direction : Arthur Martel

## ➤ MONTPELLIER

Aéroport Montpellier Méditerranée,  
300 Avenue Jacqueline Auriol  
34137 Mauguio  
Tél : 04 67 10 57 66

[montpellier@mbway.com](mailto:montpellier@mbway.com)  
Direction : Guillaume Cervera

## ➤ NANTES

4, chemin de la Chatterie  
44 800 Saint-Herblain  
Tél : 02 40 89 85 61

[nantes@mbway.com](mailto:nantes@mbway.com)  
Direction : Céline Joussaume

## ➤ PARIS OUEST

38, rue Anatole France  
92 300 Levallois-Perret  
Tél : 01 55 07 07 57

[parisouest@mbway.com](mailto:parisouest@mbway.com)  
Direction : Mounia Belainoussi

## ➤ PARIS SUD

61 bis rue des Peupliers  
92100 Boulogne Billancourt  
Tél : 01 41 09 99 20

[parissud@mbway.com](mailto:parissud@mbway.com)  
Direction : Cindy Cabit

## ➤ RENNES

8, rue Louis Kéroul Botmel  
CS 36714 - 35 067 Rennes  
Tél : 02 30 03 39 39

[rennes@mbway.com](mailto:rennes@mbway.com)  
Direction : Elodie Couapel

## ➤ STRASBOURG

15, rue des Magasins  
67 000 Strasbourg  
Tél : 03 88 37 55 70

[strasbourg@mbway.com](mailto:strasbourg@mbway.com)  
Direction : Leila Ménard

## ➤ TOULOUSE

373 L'Occitane, Bâtiment Ampère  
31 670 Labège  
Tél : 05 32 11 00 37

[toulouse@mbway.com](mailto:toulouse@mbway.com)  
Direction : Virginie Brunel

## ➤ VANNES

1, rue Marie Curie  
Zone Atlanparc, Bâtiment K  
56 890 Plescop / Vannes  
Tél : 02 57 47 02 66

[vannes@mbway.com](mailto:vannes@mbway.com)  
Direction : Eva-Elora Salle